

ATOURLZ



FLY ME TO FIJI



This Fam is a great opportunity for you to see, experience and feel firsthand what Fiji has to offer. The fam includes airfare from Los Angeles on Air Pacific and is focused on how Fiji can be flexible, cheap and yet the most memorable experience for your clients.



Canadian Institute
of Travel Counsellors
Institut canadien
des conseillers en voyages

DATES February 25, 2010 to March 4, 2010

TRAVEL AGENTS ONLY RATE CAD545 pp/dbl

Prices are per person sharing a Double Room and are based on a minimum of 7 participants. Related taxes for LAX-NAN-LAX flights are extra. 3% surcharge on credit card payments. In the event that the group size is less than 7, then the price per person is subject to increase.

Information
Steve Gillick/CITC
Tel 416-484-4450
Toll Free 800-589-5776
Email fams@citc.ca



**Click here to download
the complete itinerary**



DAY 1 (27 FEB 10) ARRIVE NADI (DEPARTS LAX 25 FEB 10)

(Meals: B, L)

Arrive at Nadi International Airport by Air Pacific flight FJ 811 (departs from Los Angeles on 25 Feb 10). Meet and greet with our Local Representatives and transfer to Sofitel Fiji Resort and Spa.

Check in and have time to refresh and Champagne Breakfast with pre-registration. At 11:30am, meet for a site inspection of the property followed by lunch.

Afternoon is free at leisure.

At around 6:00pm, meet at the lobby and transfer to Port Denarau Marina where you will have your dinner (at own expense). Transfer back to hotel.

Overnight at Sofitel Fiji Resort and Spa



DAY 2 (28 FEB 10) NADI → CASTAWAY ISLAND RESORT

(Meals: B, L, D)

Breakfast at leisure. Check out hotel. Around 08:30am, transfer to Port Denarau for your cruise to Castaway Island Resort.

Arrive and check-in at Castaway and have a site inspection.

Lunch at leisure.

Enjoy your Snorkel lesson followed by snorkel excursion.

Around 6:00pm, meet for sunset cocktails followed by dinner.

Overnight at the Castaway Island Resort



DAY 3 (01 MAR 10) CASTAWAY ISLAND RESORT → MALOLO ISLAND

(Meals: B, L, D)

Breakfast at leisure. Check out hotel and boat transfer to Malolo Island Resort.

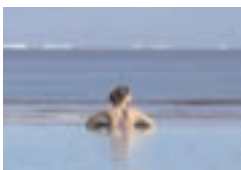
Arrive at Malolo and site inspection of Malolo & Likuliku.

Enjoy your lunch at Malolo.

Check in at Malolo Island Resort.

Around 5.30pm, meet for cocktails followed by dinner.

Overnight at Malolo Island Resort



DAY 4 (02MAR10) MALOLO ISLAND → NADI

(Meals: B, D)

Breakfast at leisure. Check out hotel and transfer by boat to Nadi. Today, travel down to Intercontinental Resort. Enroute, Stop at Nadi Town for shopping and lunch (at own expense).

Arrive at new InterContinental Resort and afternoon at leisure.

Around 5:30pm, meet for site inspection followed by dinner.

Overnight at Intercontinental Resort.



DAY 5 (03 MAR 10) NADI

(Meals: B, L, D)

Breakfast at the hotel. Check out and Site inspection of the Natadola Golf course followed by lunch. Around 2:30pm, transfer to Outrigger on The Lagoon Resort. Around 3:15pm, proceed for the tour of the Kula Eco Park. Imagine, if you will, a cool green forest nestled in a small valley. A stream wanders between the trees, making its way through the valley to the Pacific Ocean. Trees bearing strange fruits, nuts and blossoms have names like Dawa, Ivi, Vutu and Vesi and tower above the valley floor filtering the sun. The banks of the stream are dotted with brightly colored flowers and shrubs. As you wander over the many bridges spanning the sparkling ribbon of water, you're greeted by the call of barking pigeons, the shrill of honey eaters and the constant, pulsing concert of unseen forest dwellers. This is the South Pacific. This is the wild side of Fiji and you've arrived at Kula Eco Park.

On arrival, the local staff will greet you explain just what they are doing at Kula Eco Park. The reception building houses displays of insects, butterflies and moths and a host of Fiji's wonderful sea shells. Just outside on the patio you'll meet a bunch of friendly residents including "Baby", the Kadavu red breasted musk parrot. You'll have the chance of a photo session with parrots and iguanas that actually enjoy posing for you!. Then its off along the wooden walkway and into the forest!

Check in at The Outrigger On The Lagoon Resort.

Around 5.00pm, site inspection of the Resort followed by dinner.

Overnight at the Outrigger On The Lagoon Resort



DAY 6 (04 MAR 10) DEPART

(Meals: B, D)

Breakfast at the hotel. This morning, transfer to Novotel Nadi for site inspection and use of day rooms.

Day at leisure. Lunch at own expense.

Early dinner at the hotel.

Around 8.00pm, transfer to the airport for your flight back to Los Angeles.





ATOURZ/CITC/Air Pacific Fiji Fam

February 25, 2010 to March 4, 2010



TRAVEL AGENT RATE CAD545 pp/dbl

Prices are per person sharing a Double Room and are based on a minimum of 7 participants. Related taxes for LAX-NAN-LAX flights are extra. 3% surcharge on credit card payments. In the event that the group size is less than 7, then the price per person is subject to increase.

FLIGHTS BOOKED ON AIR PACIFIC

LAXNAN FJ 811 25FEB 2130 0515+2 (27FEB)

NANLAX FJ 810 04MAR 2250 1205 (04MAR)

DEPOSIT & FINAL PAYMENT

A non-refundable deposit of CAD250 is to be paid to ATOURZ by December 22, 2009 and the balance is due on January 07, 2010.

CANCELLATION CHARGES

60 days or more loss of deposit

59-31 days 60%

30-0 days 100%

RECOMMENDED AIR ON UNITED AIRLINES (YYZ-LAX-YYZ)

YYZLAX UA 855 25FEB 0700 1242

LAXYYZ UA 8324 04MAR 2235 0611+1

Airfare: CAD533 + Taxes CAD116.71 (based on current availability and subject to change). Quotes based on departure from other Canadian cities available upon request.

PROGRAM INCLUDES

- Airfare from Los Angeles - Nadi - Los Angeles
- Accommodation as mentioned in the itinerary
- Transfers, sightseeing and activities as mentioned in the itinerary.
- Meals as indicated in the itinerary (B-breakfast, L-lunch, D-dinner)
- Services of our Local Representative at Nadi Airport

PROGRAM DOES NOT INCLUDE

- Air ticket from Canada to Los Angeles and related taxes
- Taxes for LAX-NAN-LAX flights - CAD328.18 subject to change without prior notice
- Meals or any other item not described in the itinerary
- Expenses of a personal nature
- Tips and gratuities

TRAVEL DOCUMENTATION

A valid Canadian passport is required for Canadians intending to visit Fiji. The passport must be valid for at least three months beyond the date of your expected departure from Fiji. Visitor permits are issued on arrival for stays not exceeding 4 months. However, these requirements are subject to change at any time. It is your responsibility to check with the Embassy of Fiji for up-to-date information and obtain, at your own expense, all the required documentation.

TRAVEL INSURANCE

We strongly recommend that you obtain full insurance coverage, including travel, cancellation, medical, evacuation and other emergency coverage prior to departure.



USEFUL INFORMATION

General information about the Fiji Islands

When most people think of Fiji they think of azure waters and white-sand beaches, coral islets and tropical resorts. Fiji has all this but it also has much more. Once a volcanic area, Fiji is home to rugged mountains, lush green rainforest, waterfalls and remote villages. Culturally, Fiji has become the melting pot of the South Pacific. The influences of Pacific, Indian, European and Chinese cultures are reflected in the food, architecture, language and religion. Fiji is a country of colour and unsurpassed hospitality with a surprise around every corner. Its diversity, proximity and unparalleled beauty make Fiji the ultimate reward.

Business hours

Most businesses operate Mon to Fri 8am - 5pm. Supermarkets and souvenir shops are open 7 days a week. All tourism related industries operate 6 to 7 days a week. Several tours that involve a village visit will not operate on a Sunday for religious reasons.

Climate

Fiji enjoys a maritime climate without great extremes. The cooler dry season is from May to October and the warm wetter season from November to April. Warm season temperatures average 30 degrees Celsius and the cool season average is 26 degrees.

Communications

All telephone, fax and email communication both locally and internationally are readily available from most Hotels in Fiji. Email cafes have started to appear in the major cities and on island resorts. Reception is good and direct dialling to all overseas destinations is available.

Currency

Fiji has it's own currency. The national money is Fijian dollars and cents and the current exchange rate operates at roughly CAD0.56 for F\$1.00.

Diet

Fiji restaurants and hotels cater to almost any taste or dietary requirement. They get a lot of fresh imported vegetables and have a wide variety of local fruit and vegetables.

Dress

Visitors need light casual clothing suitable for the tropical climes of Fiji although during the dry season night-time temperatures can drop to the late tens or early 20s and a light sweater may be needed. Revealing clothing is frowned upon in public places, particularly in villages.

Driving

International driving permits and overseas driving licenses are recognised in Fiji for a period of six months. Driving is on the left-hand side of the road and most main roads are paved and in good condition.

Electricity

Electricity in all resorts is 240 volts, 50 cycles A.C. Some resorts may have 110 volt outlets for use as well.



Geography

Located in the heart of the Pacific, Fiji has more than 330 islands. The two largest islands, Viti Levu and Vanua Levu make up 85% of the total land mass. Many of Fiji's islands are surrounded by reefs and lagoons that provide visitors with spectacular underwater scenery. Fiji's capital and largest city, Suva, is located on the south eastern side of Viti Levu, linked to the international airport by air and road.

Health

Fiji is free from most tropical diseases, including malaria and inoculations are not required unless visitors are entering from an infected area. Drinking water in cities and resorts is regularly tested and safe to drink. Medical services are available in the main towns.

Language

English is one of the national languages and is therefore widely spoken throughout the country. All those who work in the tourism industry speak English fluently. Other national languages are Fijian and Hindi.

Time Zones

Although the 180th Meridian passes through the Fiji Group, the International Date Line is adjusted so that the entire archipelago falls into the same time zone; 12 hours ahead of Greenwich Mean Time (GMT).

Tipping / Taxes

Tipping is at your discretion. All Goods and Services incur VAT.



TRAVEL AGENT RATE

CAD545 pp/dbl

Prices are per person sharing a Double Room and are based on a minimum of 7 participants. Related taxes for LAX-NAN-LAX flights are extra. 3% surcharge on credit card payments. In the event that the group size is less than 7, then the price per person is subject to increase.

DEPOSIT & FINAL PAYMENT

A non-refundable deposit of CAD250 is to be paid to ATOURZ by December 22, 2009 and the balance is due on January 07, 2010.

APPLICATION FORM FOR ATOURZ/CITC/AIR PACIFIC FIJI FAM

I. Applicant Information

Last Name: _____ First Name: _____

CITC Membership #: [] CTC [] CTM [] No Designation

Title (Mr/Ms/Miss/Mrs): _____ Business Title: _____

How long have you been a travel consultant (years)? _____

How long have you been with the current agency (years)? _____

Have you ever been to Fiji/South Pacific? If yes, when was the last time (year)? _____

Smoker/Non-smoker: _____

Allergic to any foods?: _____

Are there any dietary requirements or medical concerns that we should know about for the purpose of this Fam trip? _____

Nationality/Passport No: _____

Expiry Date: _____

Full Name (as it appears on your passport): _____

Date of Birth: _____

II. Agency Information

Agency Name: _____ IATA/TIDS No: _____

Address: _____

City: _____ Province: _____ Postcode: _____

Telephone: _____ Fax: _____

Email: _____ Website: _____

Groups vs FIT (%): _____ Groups % _____ FIT % _____

Business vs Leisure (%) : _____ Business % _____ Leisure % _____

Has your agency worked with a tour operator in Fiji/South Pacific before?: _____

If yes, what is the name of the tour operator?: _____

Manager's Name (please print): _____

Manager's Signature: _____

Please note that this fam is for travel agents only. Spouses or companions are not allowed on this fam.

FAX OR EMAIL YOUR COMPLETED APPLICATION BEFORE DECEMBER 20, 2009 TO:

Fax: (416) 484-4140
Email: fams@citc.ca